

VURSA *kd* SERIES
SHOWER STALL

Oasis®

SH3P-4834LS ABF



MULTI-PIECE MODEL



SH3P-4834 (3-piece / single seat)

Rough-In Dimensions

48" wide x 35-1/4" deep x 76-3/4" high (with 4-inch dam)

Finished Dimensions

48" wide x 34" deep x 75-1/2" high (with 4-inch dam)

Unit Features

- Three - Piece Fiberglass Composite Construction
- Sanitary Grade Polyester Gelcoat Surface
- Front-Side Installation With Minimal Sealant Requirements
- 3-3/8" Dia. Center Drain
- Anti-Drip Front Dam Ledge
- Corner Accessory Ledge
- Generous, Multi-Level Back Wall Shelving
- Single, Ergonomic Right or Left Hand Seat
- Ergonomic Corner Foot Rest For Shaving
- Wall Design Accommodates Grab Bar Applications
- Textured Floor Pattern
- 1/2-inch Balsa Wood Core Floor Structure



Special Notes

- Optional ABF Model (provides 3-inches of drain clearance)
- 'QwikClic' Technology (Patents Pending)
- Factory Applied Reinforcement Packages Available (see following pages)
- Factory Applied Bar Packages Available (see following pages)

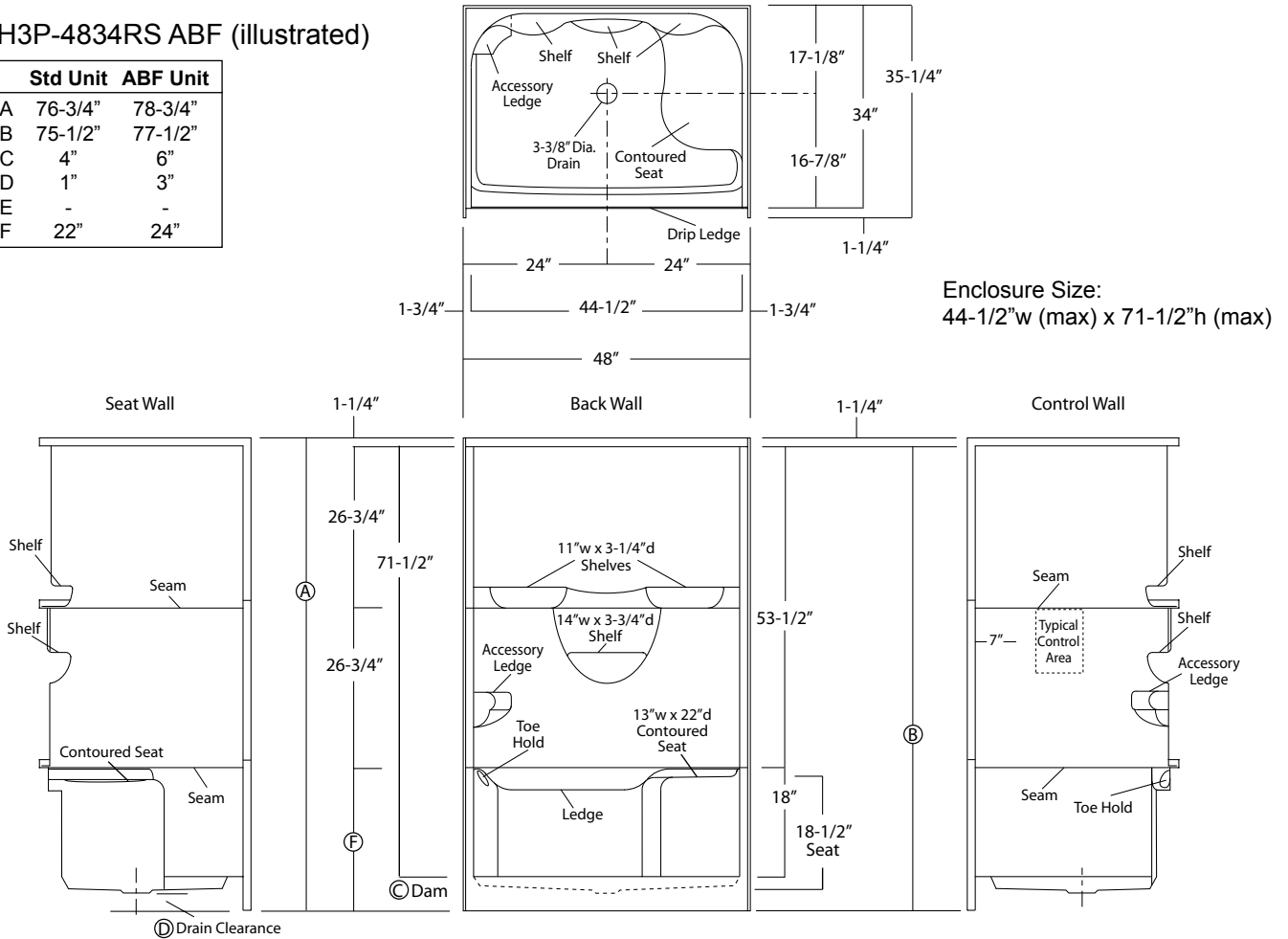
Order No.: SH3P-4834RS (RH seat / 4" dam)
 SH3P-4834LS (LH seat / 4" dam)

Order No.: SH3P-4834RS ABF (RH seat / 6" dam)
 SH3P-4834LS ABF (LH seat / 6" dam)

48" x 34", 3-piece gelcoated fiberglass shower with 'QuikClic', front side installation, 4" low profile dam (1" drain clearance) multi-level back wall shelves, corner accessory ledge, integrated toe hold/shaving rest, molded end seat, and center drain.

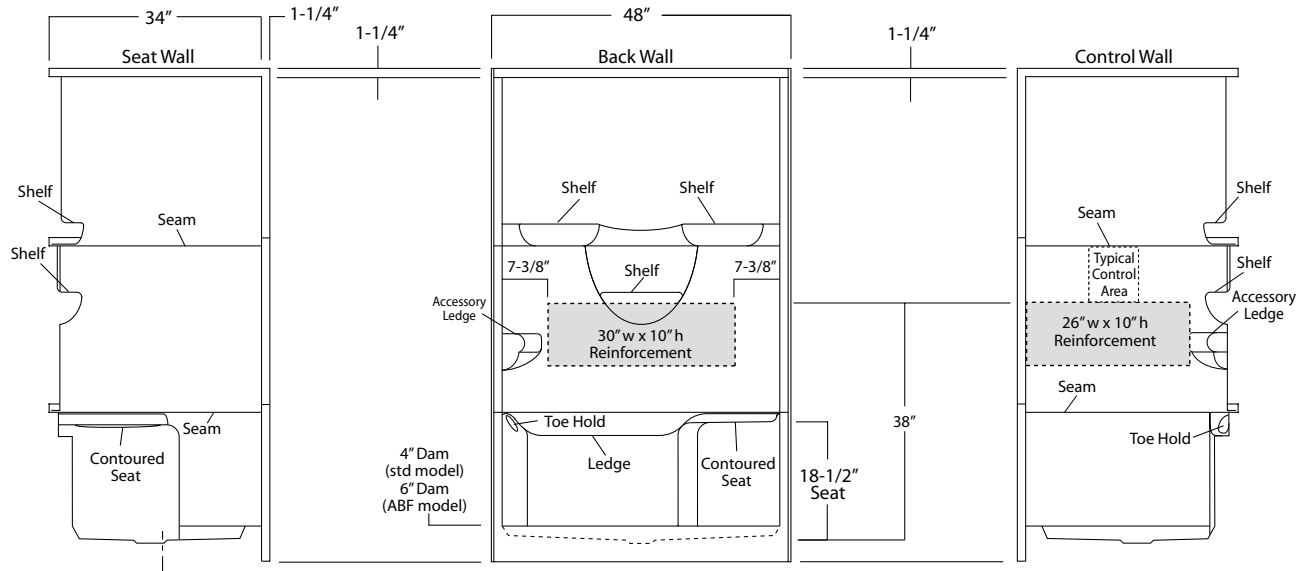
SH3P-4834RS ABF (illustrated)

	Std Unit	ABF Unit
A	76-3/4"	78-3/4"
B	75-1/2"	77-1/2"
C	4"	6"
D	1"	3"
E	-	-
F	22"	24"



Package Order No.: FH (Fair Housing wall reinforcement)

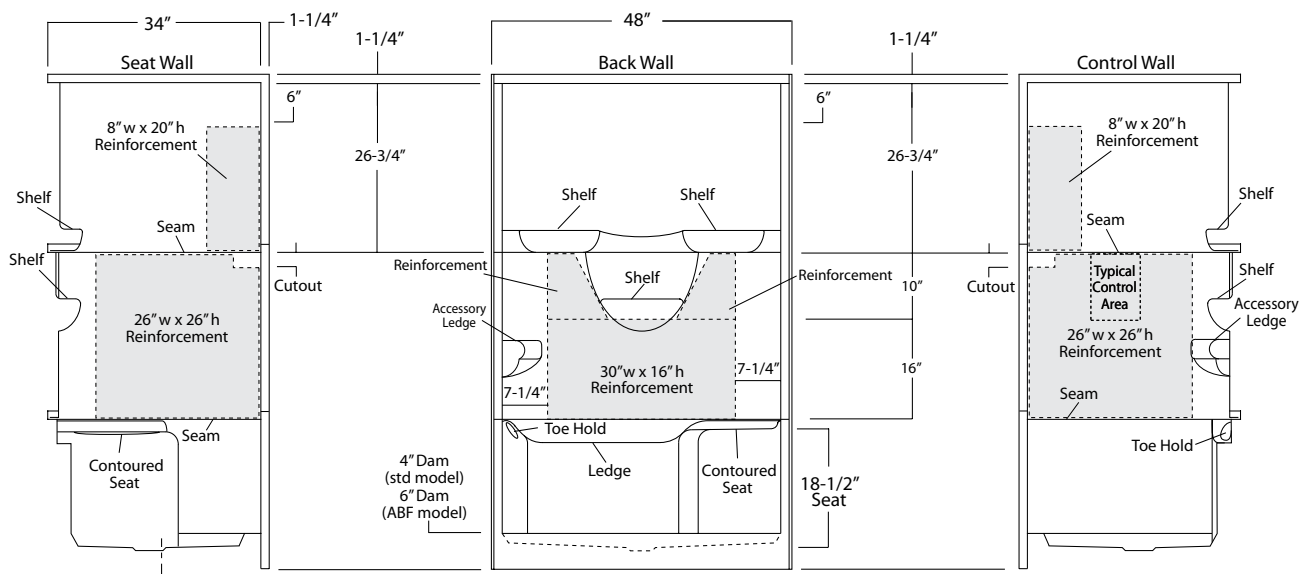
Package Includes: Factory applied, HUD-FHA compliant (Fair Housing), structurally reinforced wall areas (as shown) for the independent field application of bars.



Package Order No.: 3SM (3-side, mid-level wall reinforcement)

Package Includes: Factory applied, 3-side, mid-level, structurally reinforced wall areas (as shown), exceeding 'Fair Housing' (HUD/FHA) requirements, for independent field application of bars.

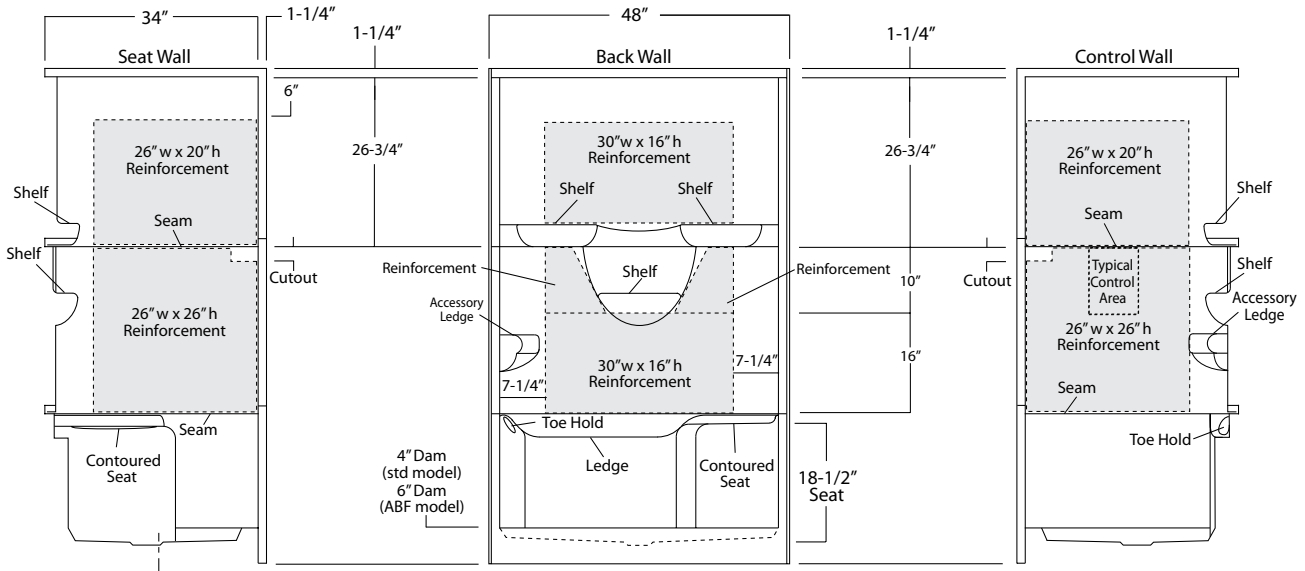
NOTE: Factory installed stainless bar packages available using 3SM reinforcement.



Package Order No.: 3SF (3-side, full-wall reinforcement)

Package Includes: Factory applied, 3-side, full-wrap, structurally reinforced wall areas (as shown), exceeding 'Fair Housing' (HUD/FHA) requirements, for independent field application of bars.

NOTE: Factory installed bar packages available using 3SF reinforcement.



Package Order No.: BP1 (2-bar only package)

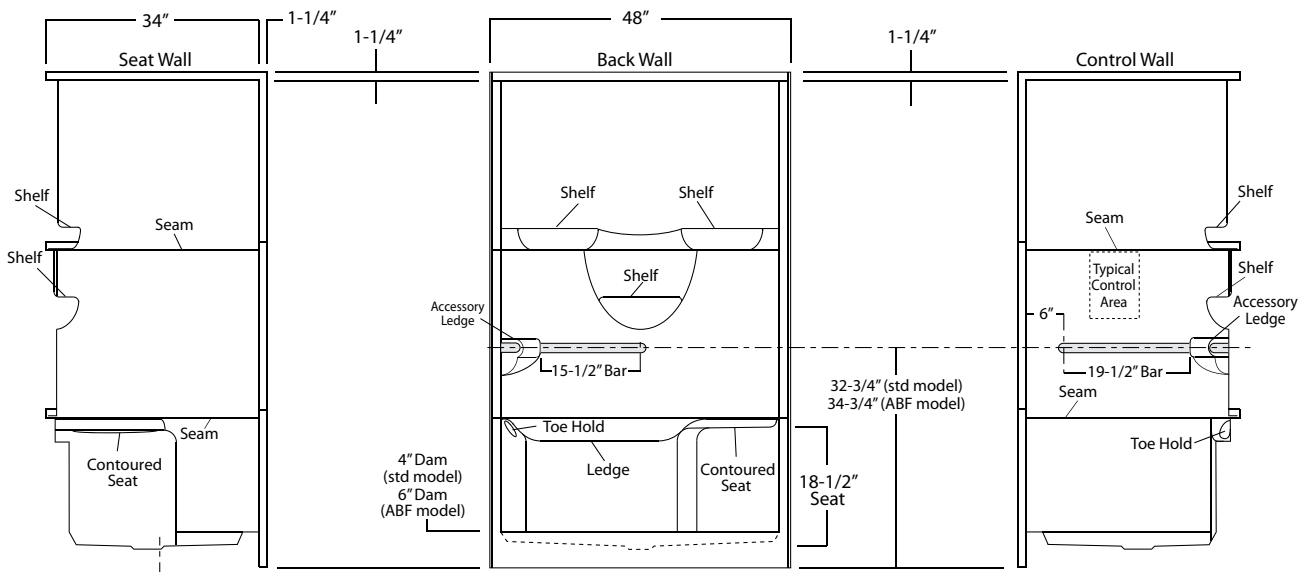
Upgrade Package No.: BP1 WHT (1-1/4\"/>

BP1 OFW (1-1/4\"/>

BP1 SNK (1-1/4\"/>

Package Includes: Factory installed, 1-1/2\"/>

NOTE: Enhanced reinforcement available, see 3SM & 3SF packages.



Package Order No.: **BP2 (3-bar only package)**
 Upgrade Package No.: **BP2 WHT (1-1/4" dia., white powder coat, 3-bar only package)**
BP2 OFW (1-1/4" dia., off-white powder coat, 3-bar only package)
BP2 SNK (1-1/4" dia., satin nickel, 3-bar only package)

Package Includes: Factory installed, 1-1/2" dia. stainless steel, 3-bar package with basic reinforcement for components (as shown).
 NOTE: Enhanced reinforcement available, see 3SM & 3SF packages.

